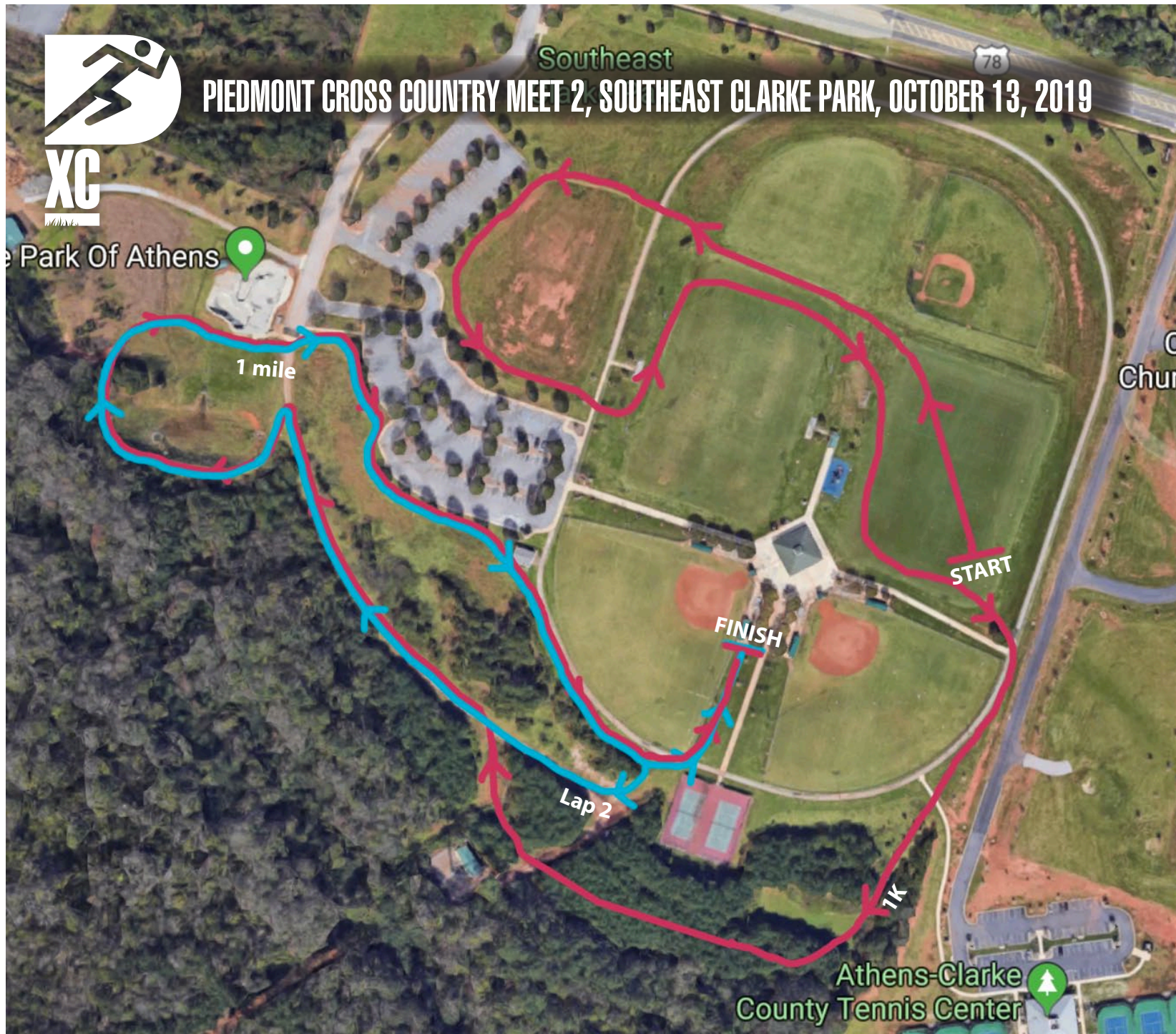




PIEDMONT CROSS COUNTRY MEET 2, SOUTHEAST CLARKE PARK, OCTOBER 13, 2019

the Park Of Athens



KEY

2k Race:
1 lap, red line

3k Race:
1st lap (2k), red line
2nd lap (1k), blue line

The first course of the Piedmont Series is flat and spectator friendly. It is a mix of grass, dirt trail and dirt/gravel road. The first kilometer is completely on grass (*with one walkway crossing*) then transitions to a wooded dirt trail. This leads into a short section of dirt/gravel road then back to grass through 2k.

For the 3k race, runners will turn right before the finish and repeat the wooded/grass loop.